

Whispering Words

Summer 2017



Whispering Woods Resort Managed by Vacation Resorts International

View the Changes at whisperingwoods.net

SUMMERTIME... ...AND THE LIVIN' IS EASY

Easy living should include movement. "Motion is Lotion" and summer hiking can be one of the most rewarding ways to get moving! One of Oregon's "secret" hideaways is located about 60 miles from Welches and if you've never visited White River Falls State Park, this should be the summer to take the drive. In addition to the spectacular falls, this is a beautiful place to picnic and enjoy some easy living.



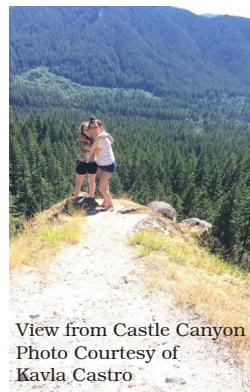
Photo Courtesy of White River Falls State Park

ON THIS PAGE

- White River Falls State Park
- Castle Canyon
- Solar Eclipse

IN THIS ISSUE

- Scam Warning
- Mountain Time
- New Mountain Dining



View from Castle Canyon
Photo Courtesy of
Kavla Castro

Another slightly more challenging hike is Castle Canyon. Although it is short—less than two miles round trip – it begins a steep ascent almost immediately. The hike leads to tower-like rock formations called the Pinnacles.

The trailhead is about three miles from Welches, less than a five-minute drive. Pack a snack and watch your step because it does get tricky in spots. The views along the way and at the top are worth the effort.

Hiking details can be found at the U.S. Forest Service website or you can visit the Whispering Woods website and click on "Things to Do" for an extensive list of area events and activities.

LOCATION, LOCATION, LOCATION!

If you're planning to view the 2017 Total Solar Eclipse on August 21, Central Oregon is among the top 10 locations for viewing because of its great summer weather, wide open skies and lots of public land. Madras, Oregon, about an hour and a half from Welches (76 miles) is an ideal viewing spot as it lies directly on the path to view the eclipse beginning at 9:06 am with totality starting at 10:19 am. Totality lasts for only two minutes but it is well worth any preparation you might have to make. Remember: sunglasses are not sufficient for viewing and can be dangerous to your eyes so be sure to have properly filtered lenses.

**TOTAL SOLAR ECLIPSE
AUGUST 21,**



Visit Your Resort
anytime at:

www.whisperingwoods.net

DON'T GET TAKEN!



If you are considering selling your Whispering Woods ownership, please be aware that there are some unscrupulous people out there who make very large profits by offering to help you “get rid of your timeshare NOW!” Many of these companies charge a hefty fee to assist you and then do little or nothing to accomplish the transfer. Before you do anything, call the Resort. We do not have a buy-back program but we can provide information on how you might proceed with divesting yourself of your timeshare.

RESERVATION REMINDERS

While the U.S. Postal Service still is a terrific value, postage costs can add up. To save on postage, we would like to email as many reservation reminders as possible. To make your reservations or notify us that we should email your reservation reminders, please email reservations@whisperingwoods.net or call 503-622-3171.



Photo Courtesy of Kristen Hinkley

“MOUNTAIN TIME”

“If you’re lucky enough to live in the mountains, you’re lucky enough!” While you may not be a year-round resident, living in the heart of the Mt. Hood National Forest for even a short period of time allows one to slow down and reconnect with friends and family, or simply enjoy the peace and quiet that nature has to offer.

Locals are aware that things on the mountain are different, operating not so much on Pacific Time as “mountain time,” (not to be confused with Rocky Mountain Time). Things get done, of course, they just get done at a more natural pace. It’s contagious and doesn’t take long to become infected. Fortunately, there is no known cure for this phenomenon. We invite you to take some time this summer to visit “your mountain home.”

NEW RESTAURANTS ON THE MOUNTAIN

The Mt. Hood corridor, from Sandy to Timberline, boasts some of the finest eating establishments in the Northwest and beyond. When a new establishment opens, we want to be sure visitors are aware so they can try them and, hopefully, share their experience with others.

AL FORNO FERRUZZA in Rhododendron opened about 18 months ago and has been extremely well-received by locals and visitors alike. The menu is authentic Sicilian and all items are handmade from scratch. Don't let the laid-back atmosphere fool you: Stephen Ferruzza and staff take their food very seriously! Ferruzza described his pizza as "authentic style from old world Sicily," where his father was born. They use stone deck ovens to reach 800 degrees Fahrenheit, making the pizza come out "with a crunch and a chew."



The restaurant offers organic ingredients and in-season foods, including wild boar and elk, while their sauce and dough are both handmade. Ferruzza's father, Francesco, also makes ricotta cheese from scratch, used for the cannolis and calzones.

REBEL & RYE PUBLIC HOUSE opened a few months ago in Welches. This is a "gastropub", combining imaginative, upscale cooking techniques with the casual dining experience of a pub. The menu is quite diverse, something Chef/Owner Nate Weisner had as one of his goals when planning Rebel & Rye. "You can come in one night, have a burger and then in the same week, try some pad Thai or jambalaya or a quinoa bowl," says Nate.



Check out the reviews on tripadvisor and yelp for these establishments and then go and make up your own mind...and be sure to let us know what you think!

SUMMER SKIING & SNOWBOARDING

For those who just love snow sports, Timberline Lodge runs the longest ski and snowboard season in North America. As spring turns into summer, operations transition to Magic Mile and Palmer Glacier with daily access to chairlifts. Palmer tops out at 8,540 feet and is recommended for skiers and riders with upper intermediate or advanced skills. So, if you take your winter sports seriously, enjoy the season through Labor Day.



Service Directory			
Resort Office - Information, Reservations, Bonus Time	503-622-3171	FAX	503-622-5685
Rentals - Whispering Woods	503-622-3171	Vacation Resorts International	1-800-874-8770
RCI Weeks	1-877-874-3334	RCI Points	1-877-968-7476
VRI Vacation Tyme	1-866-469-8222		
Trading Places International Exchange	1-800-365-7617		
Owner Services - Assessment Billing/Collections	1-800-788-2181 (maintenance fees)		
Local Information - Visitor Info	1-800-424-3002	Road Report	1-800-977-6368
Highway Patrol (Emergency)	911		

Board Members			
Whispering Woods I			
Cheryl Scarcelli, <i>Chairperson.</i>	503-761-7753	Al Harrison, <i>Vice Chairman/ Treasurer</i>	503-256-9617
Gloria Wells, <i>Secretary</i>	503-291-1703	Steve Ackley, <i>Director</i>	503-659-4681
Judy White, <i>Director</i>	503-622-3171	Andrew Soriano, <i>Advisor</i>	503-622-3171
Whispering Woods II			
Pat Buckley, <i>President</i>	503-622-1234	Ron Quick, <i>Vice President</i>	503-397-5595
Andrew Soriano, <i>Secretary</i>	503-622-3171	Jeff Pank, <i>Treasurer</i>	503-622-3171
Jason Geno, <i>Director</i>	503-622-3171		
Joint Use Committee			
Al Harrison, <i>Chairman</i>	503-256-9617	Andrew Soriano	503-622-3171
Ron Quick	503-397-4883	Pat Buckley	503-622-1234
Pat Easterbrooks	503-622-3171		

Whispering Words is brought to you by the Whispering Woods Homeowners Associations. Its purpose is to bring news and stories of interest to the Whispering Woods Owners.

FIND US ONLINE!

... at www.whisperingwoods.net

Besides online reservations, pictures, things to see and do and area FAQs, you will also find the Owner's Only Page (password 6223171) with Reservation Request Forms, Property Tax Information, the Whispering Words newsletter, financial audits, governing documents and more.

Where else can you find us online?

www.facebook.com/whisperingwoodsresort

Most people have a Facebook account these days and so do we! Stop by and "Like Us" on Facebook and see what our friends are saying about us.

Find us on 